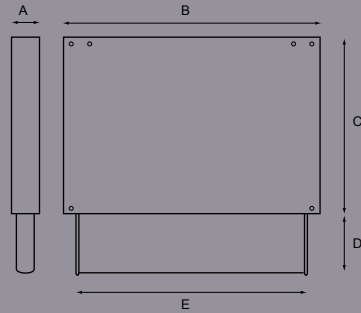
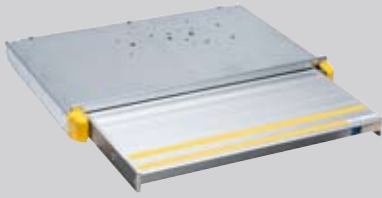




Electric Cassette Step

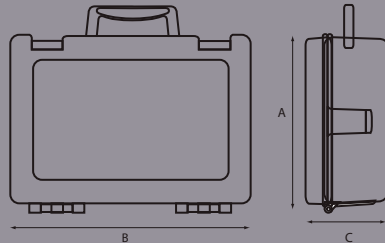


Part No.	A	B	C	D	E	F	G	H	Finish
6140	mm 60	690	470	290	610				Galvanised Steel

12V electric operation, automatically operated by door switch with manual driver override.

Supplied complete with a universal fitting kit, hi-visibility front corners & edge strip, door switch, isolation switch, wiring loom and warning light.

First Aid Kit

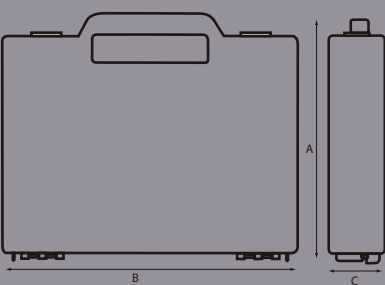


Part No.	A	B	C	D	E	F	G	H	Finish
202	mm181	257	87						Green

Contents to PSV specification, complete with mounting bracket

Can be supplied with customer logo subject to minimum order quantity

First Aid Kit

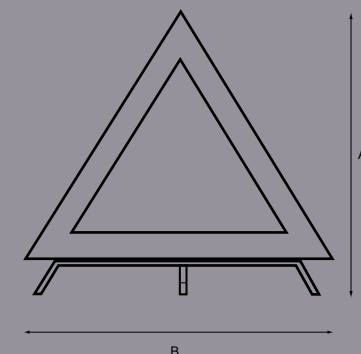


Part No.	A	B	C	D	E	F	G	H	Finish
202-1	mm202	225	50						Green

Contents to PSV specification

Can be supplied with customer logo subject to minimum order quantity

Warning Triangle



Part No.	A	B	C	D	E	F	G	H	Finish
350125	mm445	430							Red

Collapsible triangle conforming to ECE R27, supplied in a protective case.

Carrying Box size 440 x 150 x 30 mm