



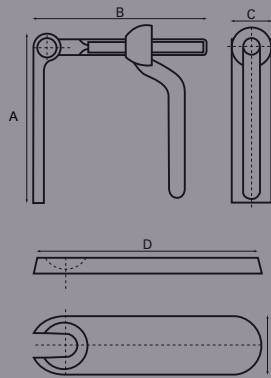
+44 (0)1454 319524
 sales@stedall.co.uk
 www.stedall.co.uk

Mounting Brackets

Cattle Truck Ramp Fasteners

Part No.	A	B	C	D	E	F	G	H	Finish
6165C	mm165	170	38	145	52				Self Colour
8153	mm165	170	38	150	40				Self Colour

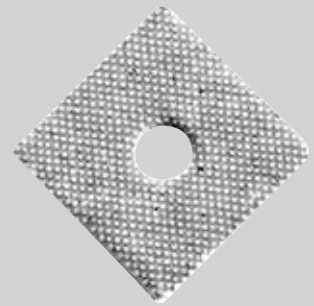
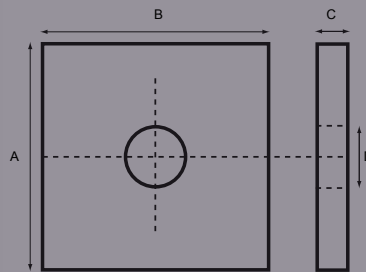
ACME Thread version Part Number 8153.



Spacing Washer

Part No.	A	B	C	D	E	F	G	H	Finish
16	mm 60	50	6	11					Self Colour

Balata packing pieces 6mm thick – 4 ply.



Balata Packing

Part No.	A	B	C	D	E	F	G	H	Finish
9001	mm 51	4							Self Colour

Roll length 10 metres – 3 ply.

Other sizes to order.



Chassis Fixing Brackets

Part No.	A	B	C	D	E	F	G	H	Finish
0353 20686	mm 28	51	15	125	40	19	15	40	Zinc Plated Steel
0353 15991	mm 30	72	15	130	20	30	45	85	Zinc Plated Steel

Clamping Range -

Part No. 0353 20686 reversible clamp suitable for 3-4mm or 4-6mm thickness

Part No. 0353 15991 clamp suitable for 10mm thickness

