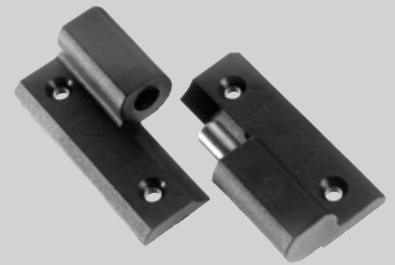
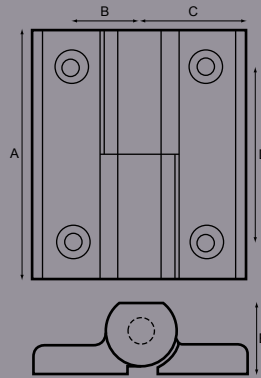




Moulded Hinges

Part No.	A	B	C	D	E	F	G	H	Finish
1444	mm 74	18	30	51	20				Black
1445	mm 74	18	30	51	20				Black

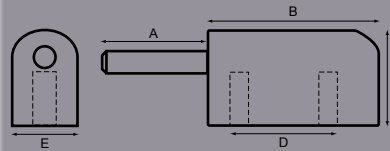
Part No.1444 (illustrated) Right Hand & Part No.1445 is Left Hand
 Body: 15% glass filled nylon moulded with 10mm diam pin in grade 303 stainless steel ultrasonically welded into lower half.
 Hole diameter 5mm countersunk to 9mm



Die Cast Hinges

Part No.	A	B	C	D	E	F	G	H	Finish
1714	mm 23	38	19	19	16				Chrome Plated

Non handed die cast hinges.
 Hinges tapped 4 x M6 x 7.5mm holes.



Weld on Hinges

Part No.	A	B	C	D	E	F	G	H	Finish
1717	mm 90	24	39	13	16				Self Colour
1718	mm110	26	49	16	20				Self Colour
1719	mm130	26	57	16	20				Self Colour

Weld on steel hinge and pin with brass washer and grease nipple.
 Non handed.
 Part No. 1717: pin diameter 8mm.
 Part No. 1718/1719: pin diameter 10mm.



Nylon Hinge

Part No.	A	B	C	D	E	F	G	H	Finish
9/00632	mm 76	40	50	20	30	9			White

Material: Nylon with stainless steel pin.

