



DATE 01/12

stedall

MS Adhesives

What is MS Polymer? It is a raw material base resin for producing sealants, adhesives and coatings. It cures with moisture. Originally developed in Japan and successfully used for over 30 years



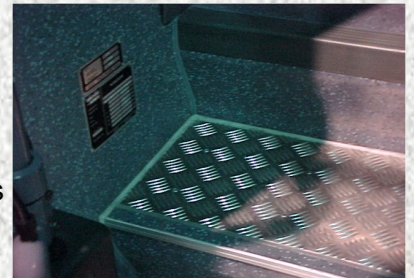
MS Polymers: Advantages

Can be painted over with water based paints

UV-resistant

Good extrudability, even at low temperatures

No bubble-formation (no CO₂ release)



Unlike PU sealants, MS does not contain isocyanates or solvents (no need for safety labels)

Permanently elastic properties, also at low temperatures

Excellent adhesion to the most common substrates

No Shrinking

Plastics can be bonded without fear of deterioration

Soudaseal 270 HS

High Strength formula

Industrial adhesive

Automotive applications that require a certain stiffness in the construction (framework of coaches, caravans, boats, trains,...)

270 HS is a faster curing product with a higher end strength

Soudaseal 240 FC

Universal bonding and sealing product

Commercial bodybuilding and industrial applications.

Without plasticisers: no migration into the substrate.

Contains fungicide



**Stedall (Vehicle Fittings)
Limited**

Badminton Road Trading Estate, Yate, Bristol, BS37 5JS, United Kingdom

Telephone +44 (0) 1454 319524 Fax +44 (0) 1454 312077

sales@stedall.co.uk

www.stedall.co.uk